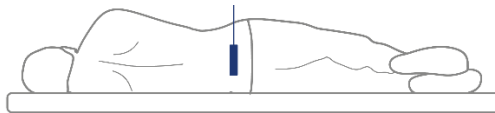
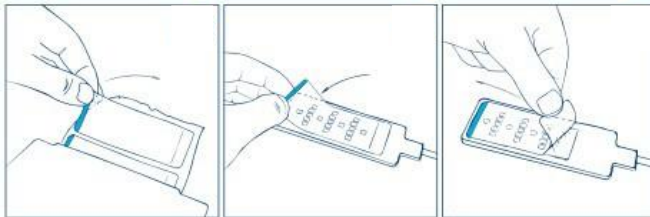




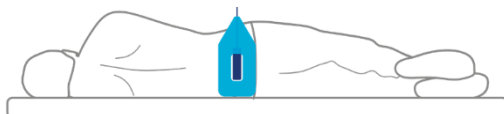
a2sensor

## Quick start guide

- 1 Start the device by pressing any button or removing it from the charger. The start-up can take up to a minute, it starts with a short beep and the display can be black during parts of the process. Make sure the sensor plate and inflatable are connected.
- 2 Attach the tape to the sensor plate, remove the protective plastic. Place the sensor plate in the lower back, over sacrum, with the cord facing up from the mattress.



- 3 Place the inflatable over the sensor plate. The hole of the inflatable should match the sensor plate and the tube should go along the cord of the sensor plate. Turn the individual to his or her back.



- 4 Press any button to wake PU sensor from sleep mode. Press **Start** to start the examination, which will take around 5 minutes. The inflatable will be inflated during the first half of the examination to relieve the pressure at the sensor plate. The examination can be cancelled by pressing **Stop**.



- 5 The examination compares the blood flow in the skin with and without the pressure from the body. The result is shown as a percentage. It is normal with some variation for the same individual due to time, mattress, and placement. The risk level can be low (green), medium (yellow) or high (red). The result should be used as a complement to the conventional risk assessment. Individuals with high or medium risk level should be considered part of the risk group and receive preventive actions if they have reduced motility. Individuals with a low risk level should be treated according to the conventional risk assessment.



- 6 When the examination is finished, turn the individual to his or her side and remove the inflatable, sensor plate, and tape. Dispose of the tape as general waste.
- 7 Clean the sensor plate and inflatable with surface disinfectant, eg 45% isopropanol. Apply generously, let work for 30 seconds and air dry. Wipe off the device.

More information: [pusensor.se/en/userpages](https://pusensor.se/en/userpages)

